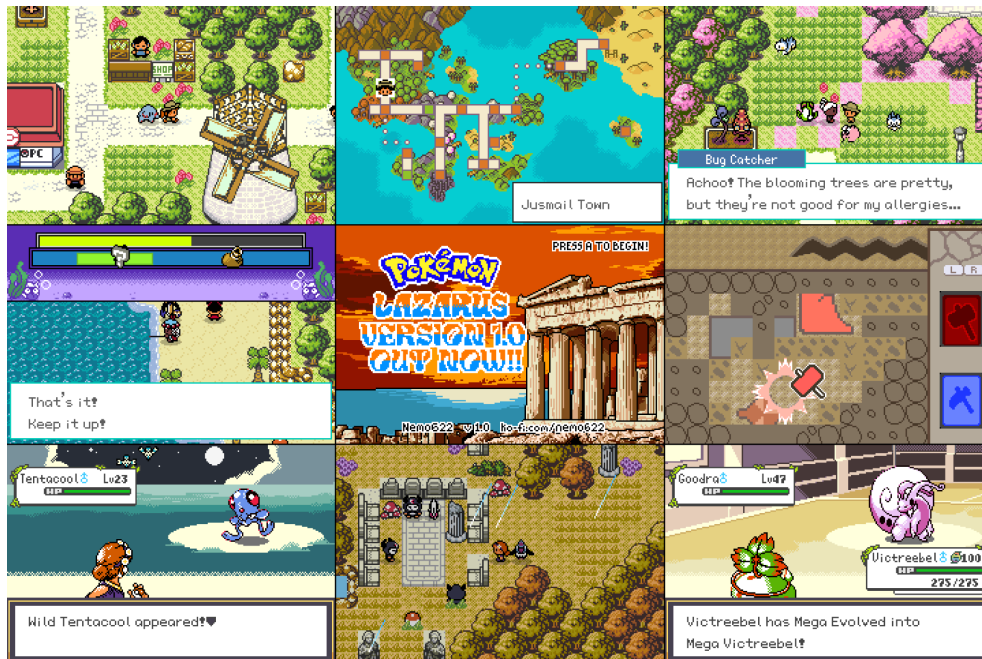


# Pokémon Lazarus Documentation



## Pokémon Encounters

Encounters are sorted by location in their own dedicated spreadsheet. If you're looking for a specific Pokémon, use CTRL+F (or CMD+F) to search for it! **Encounter locations and information are found in the dedicated Encounter Tables PDF included in the game download on Ko-Fi! :)**

Most outdoor locations have different Day and Night encounter tables. Day encounters are from 7 am to 7 pm in-game, splitting it into clean 12 hour segments. Remember to consider time of day while hunting for Pokémon!

## DexNav

The DexNav is unlocked by Professor Elia after the 2nd Gym is completed. It functions similar to Pokémon Emerald Seaglass, with holding the A Button to “creep up” to the Pokémon and shiny hunting.

## Difficulty Modes

Pokémon Lazarus has a Difficulty Mode setting, which can be changed in the second page of the Options menu alongside various other settings!

**Normal Mode:** Soft Level Caps, Standard Gym Leader teams. Can likely beat the game with most Pokémon teams, with a few battles requiring extra planning.

**Hard Mode:** Hard Level Caps, Modified Gym Leaders to be more difficult fights. Opponents gain extra levels as the game progresses, ending in a +5 level bonus to opponents. Planning before Gym battles is key, as their Pokémon have stronger moves and more coverage.

## Berry System

Berries in Pokémon Lazarus work differently than in the traditional Generation 3 games. Instead, the system resembles Pokémon X/Y's berries, with **Mulch** and **Berry Mutations**.

The Wailmer Pail and Berry-related items are obtained from the Jusmail Town Berry Club in Jusmail Town. The eccentric members of the Club sell you **Nature Mints**, **Berries**, and **Mulch**, helping you on your journey in their own ways. You can also unlock **rewards** for planting certain numbers of berries!

### **Rewards:**

- 20 Berry Trees Planted: 1 Chilan, Haban, and Roseli Berry.
- 50 Berry Trees Planted: Level 20 Woobat with Chatter, Draining Kiss, Stuff Cheeks, and Esper Wing (unique moves!)
- 100 Berry Trees Planted: 10 Amaze Mulch and a **Shiny Charm**!
- 200 Berry Trees Planted: Potted Berry Decoration. Also adds **gold star to Trainer Card**!

### **Mutations:**

Berry mutation allows the player to access **damage-reducing berries**, which can be key to difficult battles or Nuzlocke challenges. By default, there are only **10 native types of berries** found growing naturally: Aspear, Cheri, Chesto, Leppa, Lum, Oran, Pecha, Persim, Rawst, and Sitrus. **Growing these trees next to each other** has a chance of producing a tree with extra damage-reducing berries on them. The combinations are listed below:

- Cheri Berry + Rawst Berry = Occa Berry (halves fire damage)
- Chesto Berry + Aspear Berry = Passho Berry (halves water damage)

- Oran Berry + Cheri Berry = Wacan Berry (halves electric damage)
- Chesto Berry + Rawst Berry = Rindo Berry (halves grass damage)
- Aspear Berry + Persim Berry = Yache Berry (halves ice damage)
- Citrus Berry + Leppa Berry = Chople Berry (halves fighting damage)
- Pecha Berry + Oran Berry = Kebia Berry (halves poison damage)
- Citrus Berry + Pecha Berry = Shuca Berry (halves ground damage)
- Lum Berry + Rawst Berry = Coba Berry (halves flying damage)
- Persim Berry + Pecha Berry = Payapa Berry (halves psychic damage)
- Leppa Berry + Cheri Berry = Tanga Berry (halves bug damage)
- Citrus Berry + Oran Berry = Charti Berry (halves rock damage)
- Lum Berry + Pecha Berry = Kasib Berry (halves ghost damage)
- Aspear Berry + Lum Berry = Colbur Berry (halves dark damage)
- Cheri Berry + Citrus Berry = Babiri Berry (halves steel damage)

Normal, Dragon, and Fairy damage-halving berries (Chilan, Haban, and Roseli berries) are **not obtainable via mutations**. Instead, they are rewarded to the player from the Berry Club at 20 trees planted (see list above).

## **Important Game Tips**

- **Name Rater**: Old Man NPC located in a Pythios Town home.
- **Move Relearner**: There is a Move Relearner NPC in the south of Pythios Town! To unlock his services, show him you've caught 20 Pokémon. He can also help your Pokémon learn a variety of tutor-exclusive moves!
- **Fishing**: Fishing in Pokémon Lazarus resembles the minigame in Stardew Valley, with a moving bar and the chance to fish up Treasure. Each Rod type has increased bar size and a unique encounter pool.
  - Certain Pokémon have **abilities** that **make fishing easier**!
    - Piscivore (Vaporeon): drastically increases the speed of fishing
    - Sticky Hold & Suction Cups: slows the movements of the fished Pokémon

- Illuminate: increases the odds of Treasure spawning
- Sturdy, Solid Rock, and Rock Head: reduce “bounce” of bobber, helpful when rapidly moving bobber after getting Treasure
- **Farming Held Items**: certain valuable items, such as **Shards**, **Heart Scales**, and **Leftovers**, are held by wild Pokémon. All Meowth forms and Murkrow learn Thief around level 20, making resource farming easier. A Quest in Sofos City gives the **Glimmering Charm**, increasing the odds of wild Pokémon holding items, which can make held item farming even easier!
- **Mega Evolution**: Mega Evolution is unlocked by completing Niko’s quest around Sofos City (Gym 4). Niko will then host a Mega Stone Shop in Acrisia University, with a growing selection as you progress. Make sure to check back with Niko regularly as you continue to beat Gyms!
- **University Students**: In most areas with wild Pokémon, a University Student can be found researching the local ecosystem. Help them out by filling the Pokédex entries of nearby Pokémon, and they’ll give you some nice rewards! A list of all locations and rewards is found lower in the documentation.

## **Gym Leaders**

### **Gym 1: Polymnia**, Muse of Hymns and Agriculture

- Polymnia is a fun-loving gardener, using her Gym as a refuge for people and Pokémon alike. Her singing is always carrying through her Gym. She wears a simple bellflower robe with a small orange dress, perfect for conducting her work tending her plants. Polymnia specializes in **Grass and Bug-type Pokémon**.

## Gym 2: Ourani, Muse of Stone and Sky

- Ourani sure is a hard-working woman! She runs a factory in Kalami City, doubling as her Pokémon Gym. Always inspecting parts or helping around the factory, Ourani walks with a cane to keep herself strong through her long shifts. Her workers say that when she's home, she studies the movement of stars. Ourani primarily uses Rock and Steel-type Pokémon.

## Gym 3: Kleio, Muse of the Ancient Past

- Kleio harbors the unique power to see into the past and future. Her visions are blurred and mixed, but highly regarded among the people of Ilios. To better understand her visions, she immerses herself in history books and ancient scrolls. She is the oldest Gym Leader, but remains as strong as ever. True to her nature, she uses spiritual Pokémon, such as Ghost and Psychic-types.

## Gym 4: Terpsikore, Muse of Dance

- Terpsikore is obsessed with all things in harmony. In her spare time, she leads synchronized dance teams which are said to be the best in the region. Naturally, this extends to her Gym, being divided into physical and mental training sections. Only Trainers capable of handling both sides are considered worthy to challenge her. Both Fighting and Psychic-type Pokémon compose her team.

## Gym 5: Euterpe, Muse of Entertainment

- Euterpe brings joy into any room she enters, but that doesn't mean she's a pushover! The only thing she likes more than partying is winning Pokémon battles, which she does through the cunning use of Poison and Water-type Pokémon. She's well-known and well-loved across Myrrini Island.

## Gym 6: Thalia and Melpomene, Twin Muses of Comedy and Tragedy

- These Muses, despite being twins, couldn't be more different. Although they share a love of theatre, Thalia enjoys comedic shows, while Melpomene only watches tragedies.

Unfortunately, this means they can hardly tolerate each other, battling each other as much as Gym challengers. On the rare occasion they can coordinate, they fight challengers together using Electric (Thalia) and Ground (Melpomene) type Pokémon.

Gym 7: Rhadine, Muse of Love and Poetry

- Rhadine is extremely outgoing, often partying with Euterpe around the Ilios Region. She is said to inspire those around her to fall in love, whether that be with people, hobbies, or simply the world around them. She explores the thick forests of Kaptara Island with her powerful Fire and Flying-type Pokémon.

Gym 8: Kalliope, Muse of Beauty

- Kalliope was once the 8th Gym Leader of the Ilios Region. Her hometown, Areios Town, was recently taken over by Team Chimera, leading to her tragic disappearance. She is remembered as harsh and blunt, being extremely capable in battle. It is believed by many that Team Chimera captured Kalliope, managing to overwhelm her in a shocking show of force. Now, the 8th Gym stands empty, surrounded by the evil team.

## **Acrisia University Progress Rewards**

Prof. Elia Rewards:

- 10 Pokémon Caught: 1 Nugget
- 25 Pokémon Caught: 1 Loaded Dice
- 50 Pokémon Caught: TM27 Return
- 100 Pokémon Caught: Rowlet, Litten, and Popplio
- 135 Pokémon Caught: Chespin, Fennekin, and Froakie

- 170 Pokémon Caught: Sprigatito, Fuecoco, and Quaxly
- 200 Pokémon Caught: Oval Charm
- 250 Pokémon Caught: 3 Leftovers
- 300 Pokémon Caught: Shiny Charm
- 430 Pokémon Caught: Trainer Card Gold Star (good job completionists!)

#### Niko Rewards:

- Gym Badge 1: 3 Nest Balls
- Gym Badge 2: 3 Timer Balls
- Gym Badge 3: Ampharosite Mega Stone
- Complete Quest “Chimera’s Mega Plan”: Purchase Mega Stones from Niko (selection grows as story progresses!)

#### Rania Rewards:

- Gym Badge 2: 2 Wishing Stars
- Gym Badge 3: Rocky Helmet
- Gym Badge 5: See Wild Pokémon Natures (following Sidequest in Pén tepetal City)
- Gym Badge 6: TM Steel Wing

### **University Student Rewards**

In most areas with wild Pokémon encounters, you can find a University Student working on a field study. To help them out, catch the Pokémon found in the area and show them your Pokédex.

When the area is completed, they will give you a fun reward!

- Acrisia City: x15 Nest Balls
- Bronze Fields: x1 Bright Powder
- Jusmail Town: Casual Coral Outfit
- Acrisia Mountains: x15 Moon Balls
- Riverwalk Trail: x1 Eviolite
- Kalami City: TM Whirlpool & East Blue Ilios Outfit (if not previously unlocked)
- Wanderer's Woods: TM Deepwater Curse
- Pythios Town: Traditional Outfit
- Erinys Path: x2 Focus Sash
- Asfal Hills: x15 Quick Balls
- Sofos City: x1 Amulet Coin & Old Sofos Toga Outfit (if not previously unlocked)
- Kipos Town: Pokémon Box Link (Portable PC)
- Sea of Asteri: x2 Life Orb
- Marmaro Island: x20 Dive Balls
- Myrrini Island: TM Poison Jab
- Péntepetal City: Big Lapras Doll (Cabin Decoration)
- Sea of Vulcai: x1 Assault Vest
- The Fresco Isles: x1 Safety Goggles
- Palati City: TM Roost
- Kaptara Island: TM Earthquake
- Lastlight Road: x20 Timer Balls
- Tower of Dioxippus: Gyarados Doll
- Corrin Crossing: TM Dazzling Gleam



- Port Pello: Ancient War Armor Outfit
- (Note: No Uni. Students in Nyx Trails or Areios Hideout due to Team Chimera!)
- Pollen Road: x3 EXP Candy XL
- Davosi Strait: x1 Sacred Ash

## **Cheat Codes**

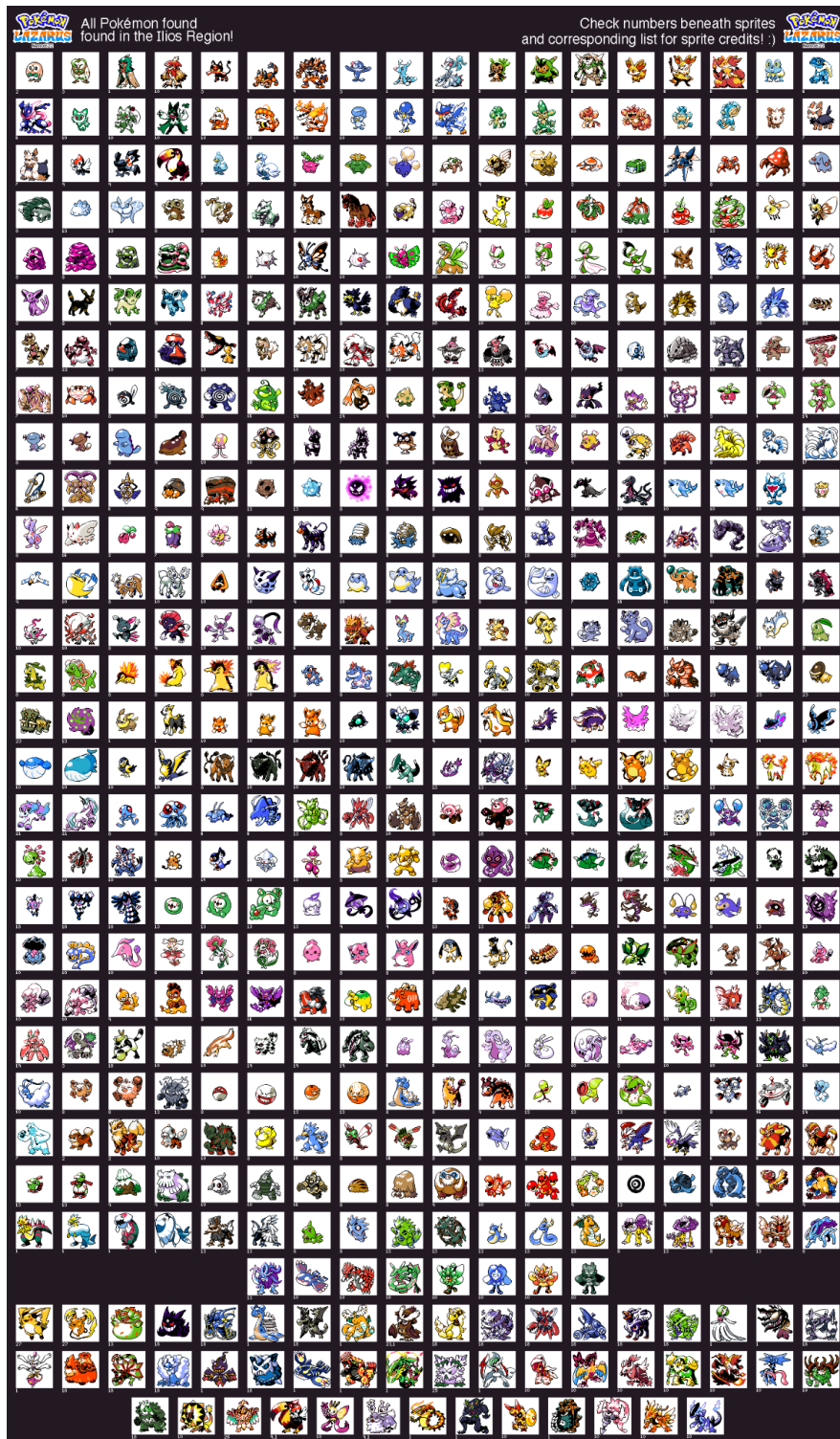
- “9RARECANDY” - Gives 999 Rare Candies
- “JUSTCATCH!” - Makes all Poké Balls catch with 100% success rate
- “DRESS UP” - Unlocks all 15 Outfits and the Outfit Box immediately
- “WILDNATURE” - Show Wild Pokémon’s Natures when encountering them (normally unlocked in a mid-game Sidequest, but it’s a fun feature)
- “PORTABLEPC” - Gives Pokémon Box Link item, allowing the PC to be accessed from the Bag
- “WORLDCHAMP” - Gives Level 5 Litten with Safety Goggles, Adamant nature, Intimidate, perfect EVs/IVs, and Knock Off, Fire Fang, Parting Shot, and Fake Out
- “WATCHPHAUN” - Gives random Stage 1 Girlypop Pokémon
- “ILOVEALOLA” - Gives 3 Alolan starters
- “ILOVEKALOS” - Gives 3 Kalos starters
- “ILOVPALDEA” - Gives 3 Paldean starters
- “IWANTMONKE” - Gives 3 Unovan elemental monkeys
- “NEMOS FAVE” - Gives a random Pokémon from a pool of my favorites (mostly first stage Pokémon).
- “JUSTSHOWME” - makes DexNav show all Pokémon on the route, whether or not you’ve seen them before
- “WISHINGSTR” - Gives 99 Wishing Stars for use in the Jusmail Town Wishing Well.
- “GIMMENUGS!” - Gives 99 Nuggets to sell for a ton of money
- “IMISSJOHTO” - Gives 3 Johto starters
- “MASKEDOGRE” - Gives Lv. 5 Ogerpon and related masks
- “LEGENDS ZA” - Gives Lv. 5 Eternal Flower Floette

- “HOUSESTARK” - Gives Lv. 5 Shiny Rockruff with the move Mountain Gale (which isn’t quite as strong as in the vanilla game but still)
- “MOSEY” - Gives Lv. 10 Alolan Meowth, inspired by my real life kitten named Mosey
- “HYLIAN FIT” - Unlocks Hylian Outfits (Link and Zelda TOTK designs!)

BELOW CODES ARE FOR **MONOTYPE RUNS** (or for those who want to use unique types from the start):

- “MONO BUG” - gives one random, first stage Bug-type Pokémon
- “MONO DARK” - gives one random, first stage Dark-type Pokémon
- “MONO DRAGN” - gives one random, first stage Dragon-type Pokémon
- “MONO ELECT” - gives one random, first stage Electric-type Pokémon
- “MONO FAIRY” - gives one random, first stage Fairy-type Pokémon
- “MONO FIGHT” - gives one random, first stage Fighting-type Pokémon
- “MONO FIRE” - gives one random, first stage Fire-type Pokémon
- “MONO FLYIN” - gives one random, first stage Flying-type Pokémon
- “MONO GHOST” - gives one random, first stage Ghost-type Pokémon
- “MONO GRASS” - gives one random, first stage Grass-type Pokémon
- “MONO GROUN” - gives one random, first stage Ground-type Pokémon
- “MONO ICE” - gives one random, first stage Ice-type Pokémon
- “MONO NORML” - gives one random, first stage Normal-type Pokémon
- “MONO POISN” - gives one random, first stage Poison-type Pokémon
- “MONO PSYCH” - gives one random, first stage Psychic-type Pokémon
- “MONO ROCK” - gives one random, first stage Rock-type Pokémon
- “MONO STEEL” - gives one random, first stage Steel-type Pokémon
- “MONO WATER” - gives one random, first stage Water-type Pokémon

# Full Pokédex



The numbers below each Pokémon correspond to the artist listed in the credits below! :)

## **Credits**

Many, many talented developers and artists are responsible for making this project possible. The credits have been split into various sections below to make them easier to navigate - please support them however you can!! :)

### **Feature Branches**

- Day/Night System created by merrp, and updated to pokeemerald-expansion by Greenphx9
- DexNav feature branch by ghoulslash
- Name Box branch by Tustin2121
- Different Wild Encounter Tables by Bivurnum
- Outfit System, New Shop UI, and GSC White Battle Background by mudskip
- New Continue Menu UI and Party Menu by Archie
- Overworld Encounters by HashtagMarky
- GSC/HGSS Ruins of Alph Sliding Puzzles by Spherical Ice
- Mining Minigame by Vol
- Fishing Minigame by Bivurnum
- Pokémon Color Variation by Jaizu
- Quest System by PokémonSanFran
- Set Preferred Follower from Party Menu by Kasen
- Universal Soundgroup by aichiya

## **Graphics**

### **Tilesets:**

- Most basic overworld sprites purchased from Anima\_nel, Zaebucca, and Arex on itch.io
- Pokémon Center, Mart, and Gym Buildings by TrainerDX
- Some GBC-style default houses by TrainerDX
- Broken pillar tiles by Hek-el-Grande on DeviantArt
- Coral tiles by Ekat99 on DeviantArt

### **Pokémon Sprites:**

Numbers below match sprites on the official Pokémon Lazarus Ilios Pokédex Image:

1. Sprite created/edited by Nemo622 (edits based on pokeemerald-expansion or official

Pokémon GBC sprites)

2. By Matdemo159
3. By Supahsanti, from Substitutube public resource
4. By MonsterHam
5. From Whack-a-Hack XY Dex
6. By SirWhibbles
7. By COMBOY
8. Official Pokémon GBC Sprite
9. By Nuukiie
10. By Egg3ggEgg (Public works & Commissions!)
11. By Enderific
12. By Rojimenez
13. By SageDeoxys

14. From 8BIT Pokédex by sktndo, from Substitube public resource
  15. By Substitube
  16. From GBC Sprite compilation by ESY
  17. By Pia Carrot
  18. Created and/or edited by kesterhenrickpixels
  19. By EeVeeEe1999
  20. By wittycrow
  21. By Coffee in the Pokémon Emerald Seaglass Discord Server (thank you!)
  22. By lakeofdance, from Substitube public resource
  23. By Koolboyman, from Substitube public resource
  24. By N-Kin, from Substitube public resource
  25. By SuicidalSushi, recolored
  26. By Zaebucca
  27. By HexTheSprinter
- "XX, 1". Parts of sprite by Artist "XX" (from above list), edited by Nemo622

#### Trainer Sprites:

- Amali and Harper sprited by me, based on TrainerDX GBC Trainer template sprites
- Johto (Ethan/Lyra) outfits by Solo993
- Kalos (Calem/Serena) outfits by com3tiin, Poketto, and Solo993 on DeviantArt
- Alolan (Elio/Selene), Paldean (Nemona/Arven), and Hylia (Link/Zelda) outfits

commissioned from TurtleDove on Twitter

- Gym Leaders sprited by me, based on TrainerDX Trainer templates and parts of Substitube and Solo993 sprites

- Many Sapphire-based GBC sprite devamps by leesongjae620 on DeviantArt
- Some GBC style Trainer sprites from Pokémon Crystal
- Scientist F, Punk Rocker, Hiker, and a few other sprites from Solo993's Unova sprite

devamps

- Professor, Performer F, Worker, and Scuba Diver sprites by Substitute
- Aroma Lady, Battle Girl, Beauty, Bug Maniac, Pokémon Ranger, and Swimming Triathlete

by Justin8964 on DeviantArt

#### Overworld Sprites:

- Many NPC sprites adapted from Pokémon Crystal
- Some NPC sprites by Anima\_nel on itch.io
- Some NPC sprites by kesterhenrickpixels on DeviantArt
- Amali and Harper (default Player) sprites by me!
- Johto (Ethan/Lyra) outfits by Solo993
- Kalos (Calem/Serena) outfits by com3tiin, Poketto, and Solo993 on DeviantArt
- Alolan (Elio/Selene), Paldean (Nemona/Arven), and Hylian (Link/Zelda) outfits

commissioned from TurtleDove on Twitter

#### Overworld Pokémon Sprites:

- Many Gen 1 and 2 overworld sprites by Anima\_nel on itch.io
- Eeveeee: Spoink, Kleavor
- SageDeoxys: Wyrdeer
- .kedoshim: Ursaluna
- Mudskip: Applin
- Jaquellion: Dipplin, Hydrapple

- Many others from Generations 3-4 by resource from Mano\_Emet on Discord (Created by Megaman-Omega)

- Many Generation 5-9 overworlds based on icon sprites by EeVeeEe1999 and LuigiTKO, modified into overworld sprites by me

#### User Interface:

- Title Screen: Pixel art done by me over original image

[here](<https://www.athens-private-tours.com/wp-content/uploads/2015/05/Acropolis-Sunset-15891085.jpg>)

- New Continue menu UI and Shop UI by mudskip (Continue menu code by Archie)

- Many Pokémon Party Icons based on following sprites (credited above), others by Chamber, Solo0993, Blue Emerald, Lake, Neslug, and Pikachu25 (Most Gen 1-2 icons)

- EeVeeEe1999: created many small sprites, especially for Gen 3, 5, 6, and 7 Pokémon

- A few Gen 6 icon sprites by dragonball253 (some Kalos starter icons)

- Many later-gen icon sprites by LuigiTKO

- Battle Backgrounds:

- Majority created by me, based on assets from Pokémon Crystal and colors / decorative assets by Zaebucca

- Sand and Arena backgrounds by AveonTrainer, edited by me

- Water background by kWherever on DeviantArt, edited by me

- Ilios Region Map by Zezitra

- Many, many item Bag icons by glados11388



## **Music**

- Tom Sanborn: Acrisia City, Bronze Pass, Jusmail Town, Pythios Town, Sofos City, Kipos Town Pokémon Center, Poké Mart, Battle Music (VS Wild, VS Chimera, VS Gym Leader, etc.)
- Katsumi No (VGMusic): Surf, Vermillion City, Tower of Dioxippus (Burned Tower), Port Pello (Buena's Password)
- Baka94 (VGMusic): Myrrini Island (Brine Cave, Mystery Dungeon), Areios Hideout (Emerald Mist, Castlevania)
- EJNorris (VGMusic): Cave, Rival & Legendary Battles (GSC Suicune Battle Theme)
- Joe Cortez (VGMusic): Underwater (Ballad of the Windfish)
- Jordan Bortner (VGMusic): Wakewater Isle (Coffee Shop, AC Wild World)
- Ingolme (VGMusic): Kalami City (K.K. Gumbo, AC Wild World)
- Dogman15 (VGMusic): Fresco Isles (K.K. Western, AC Wild World)
- Hastex (VGMusic): Ruins of Ahiyawa (A Fond Farewell, Mystery Dungeon)
- Robert Roff (VGMusic): Marmaro Island (K.K. Condor)
- GreatGabite (VGMusic): Sea of Asteri (Route 43 / Lake of Rage)
- Takkuri (VGMusic): Sailing On The Delphis (Swamp Cruise, Majora's Mask)
- Black\_Wing (VGMusic): Pollen Road / Davosi Straits (Tower, Final Fantasy Legends)
- Zagro (VGMusic): Péntepetal City (Saffron Carribean Remix)
- Nehochupeatat (Pawkkie's Shared Asset Repo), Composed by Joo \*Johnnyz\* Buaes: Generic Route music (PkmGS - 10, 12, 30, Forest), Kipos Zoo / Corrin Crossing (National Park), Palati City (GS Goldenrod), Pythios Town (Mt. Moon), Gym, Title Screen

- Spooky Spary Speletons (OnlineSequencer): Pythios Cemetery